

# LOCATIONS

IFLA EUROPE  
GENERAL ASSEMBLY  
INTERNATIONAL  
CONGRESS

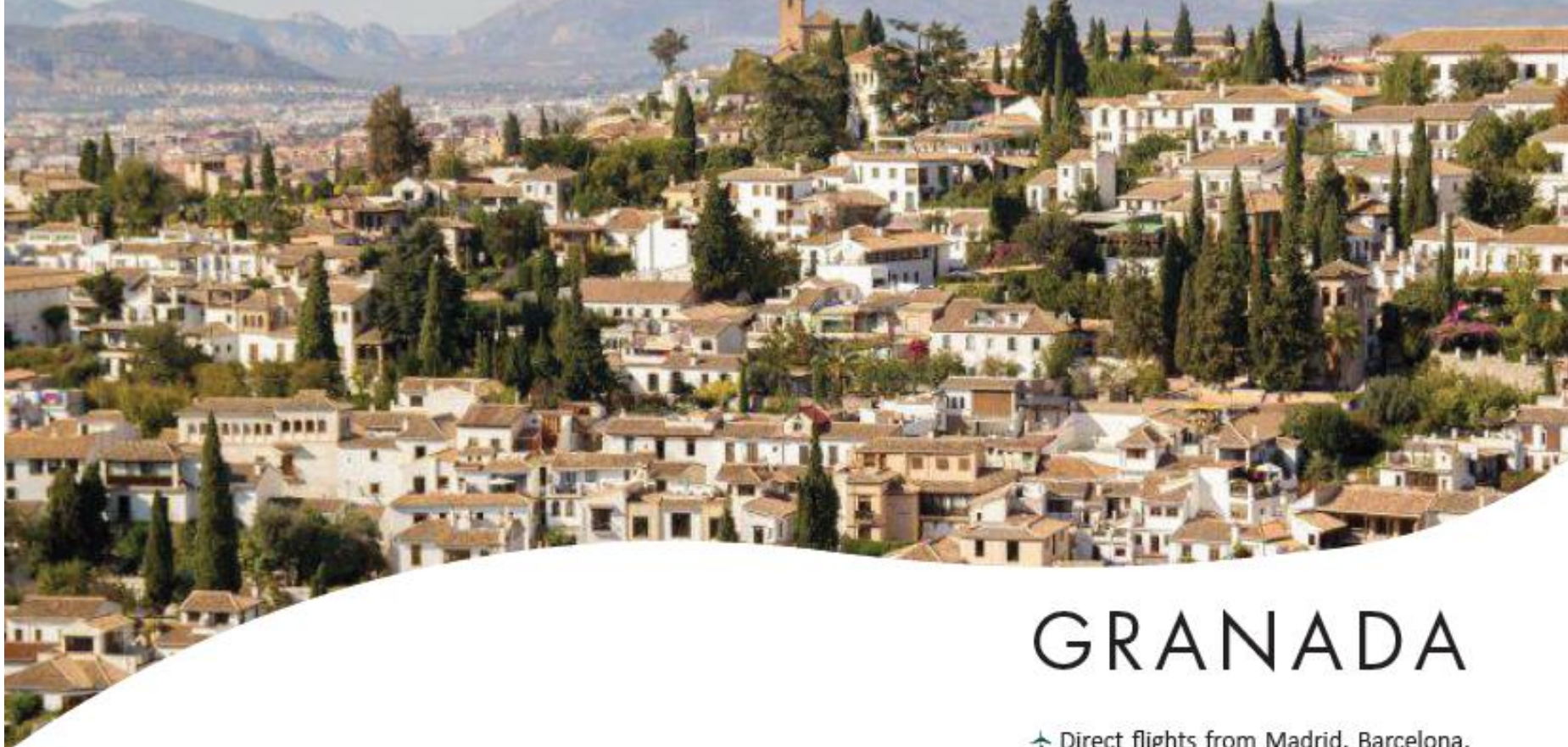
GRANADA 2021  
OCTOBER 22-24



IFLA EUROPE  
INTERNATIONAL FEDERATION  
OF LANDSCAPE ARCHITECTS



ASOCIACION  
ESPAÑOLA  
PAISAJISTAS



# GRANADA

Granada is a gritty, compelling city where serene Islamic architecture and Arab-flavoured street life go hand in hand with monumental churches, old-school tapas bars and counterculture graffiti art.

Autumn is one of the best seasons to visit Granada. The sun is bright and the temperature is warm during the day. However, you should take a jacket or jumper because it gets quite chilly at night and early in the morning.

The golden colours of autumn start to show up in the forest of the Alhambra, where more than 60 different type of trees grow together.

You will be able to step on a crunchy carpet of brown leaves coming from the chestnuts, poplars, elms and laurels.

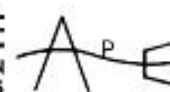
✈ Direct flights from Madrid, Barcelona, Palma de Mallorca, Alicante, Mellilla

🚌 Bus 245 Airport to center (Cathedral)  
45 min, 3 €

🚗 Taxi 25 min, 27-29 €



**IFLA EUROPE**  
INTERNATIONAL FEDERATION  
OF LANDSCAPE ARCHITECTS



The Palace, commanded by Charles V, Holy Roman Emperor, is a Renaissance building inside the Nasrid fortification of the Alhambra. The exterior of the building uses a typically Renaissance combination of rustication on the lower level and ashlar on the upper.

The plan of the palace is a square containing an inner circular patio. This has no precedent in Renaissance architecture, and places the building in the avant-garde of its time.

The palace was not completed, and remained roofless until the late twentieth century.

Nowadays, the Palace of Charles V houses two museums: Fine Arts Museum and the Museum of the Alhambra.



# RECEIVING AND PECHA KUCHA

AUDITORIO PALACIO DE  
CARLOS V





# RECEIVING AND PECHA KUCHA

AUDITORIO PALACIO DE  
CARLOS V

📍 C/ Real de la Alhambra

Auditorio  
Auxiliary Room





# GENERAL ASSEMBLY & INTERNATIONAL CONGRESS

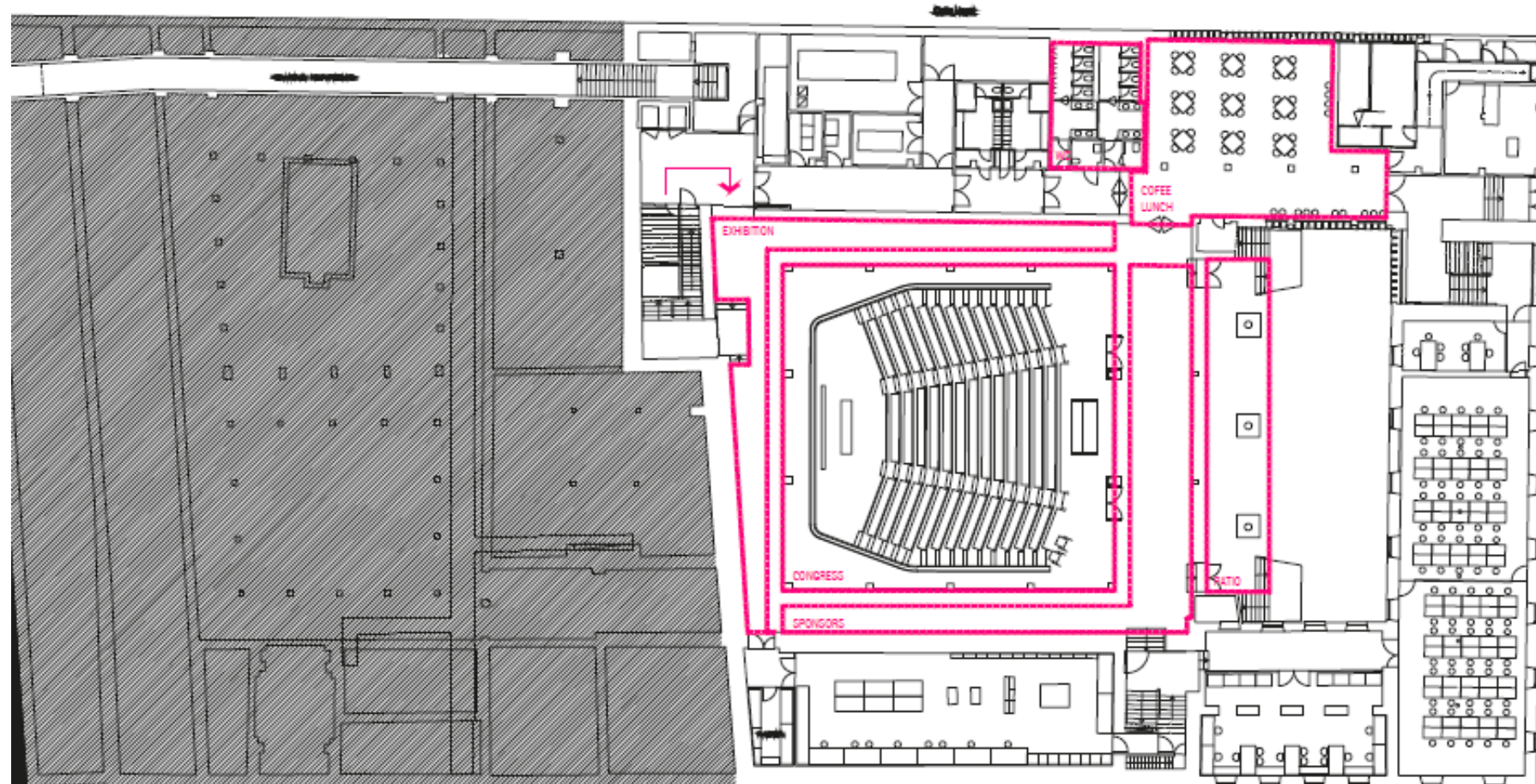
ESCUELA TÉCNICA  
SUPERIOR DE  
ARQUITECTURA



I INTERNATIONAL CONGRESS OF LANDSCAPE ARCHITECTS  
In the basement is the auditorium for the congress, an  
ambulatory for sponsors and exhibitions, also next to the  
patio is the cafeteria and restaurant area.



IFLA EUROPE  
INTERNATIONAL FEDERATION  
OF LANDSCAPE ARCHITECTS





# INTERNATIONAL CONGRESS

ESCUELA TÉCNICA  
SUPERIOR DE  
ARQUITECTURA

📍 Campo del Príncipe

- Assembly Hall
- Various types of class rooms
- Meeting rooms
- 🍽️ Cafeteria
- Exterior spaces



GENERAL

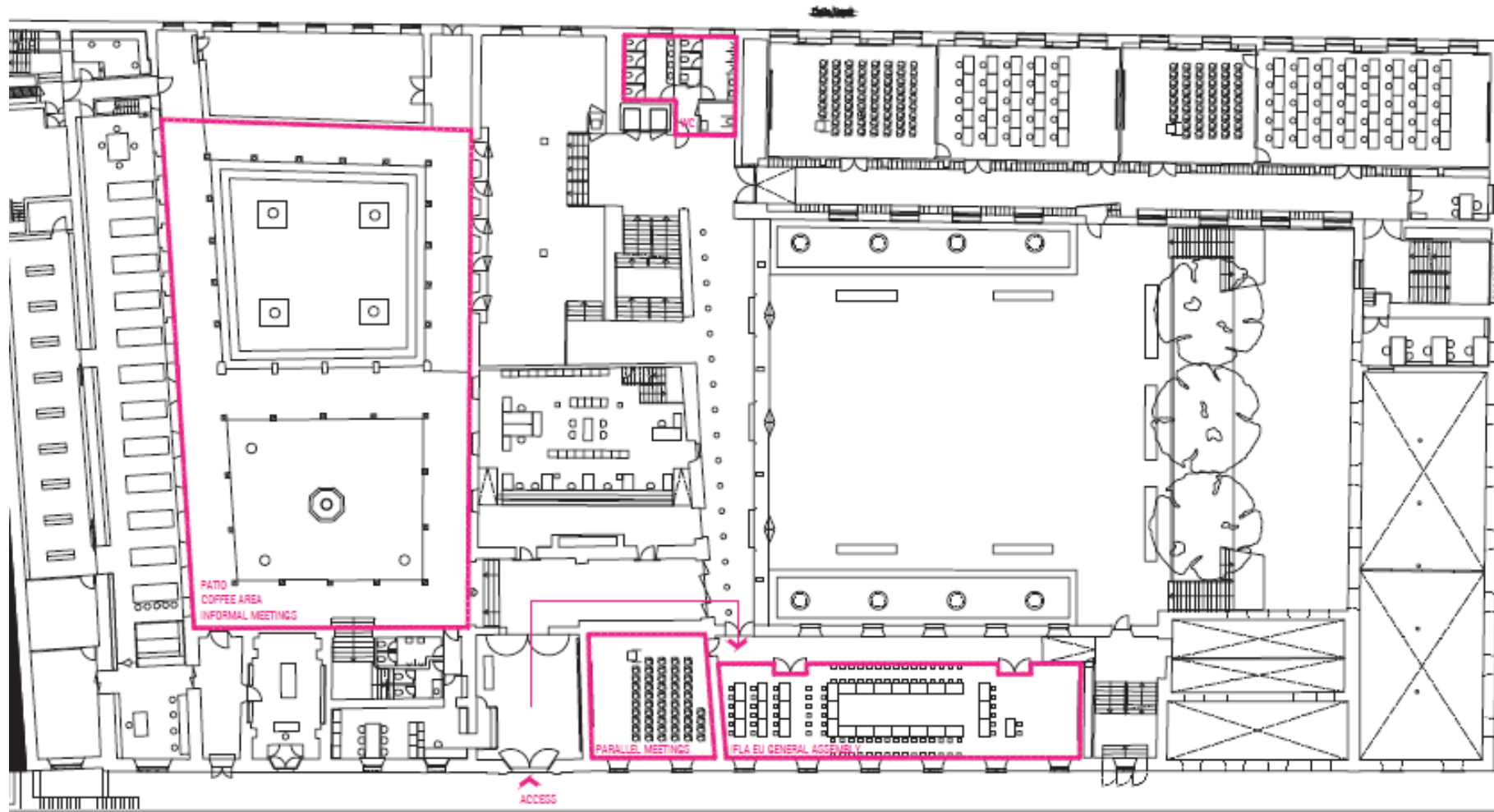
ASSEMBLY

2021

On the ground floor, there is the room selected for the assembly, a spacious space, with double height and natural light. Connects with other dependencies that allow recreation and the most informal meeting



**IFLA EUROPE**  
INTERNATIONAL FEDERATION  
OF LANDSCAPE ARCHITECTS







**IFLA EUROPE**  
INTERNATIONAL FEDERATION  
OF LANDSCAPE ARCHITECTS

**GENERAL  
ASSEMBLY 2021**

**LANDSCAPE  
HERE AND NOW**









GRANADA 2021  
**LANDSCAPE**  
**HERE AND NOW**

We wait for you in Granada



**IFLA EUROPE**  
INTERNATIONAL FEDERATION  
OF LANDSCAPE ARCHITECTS