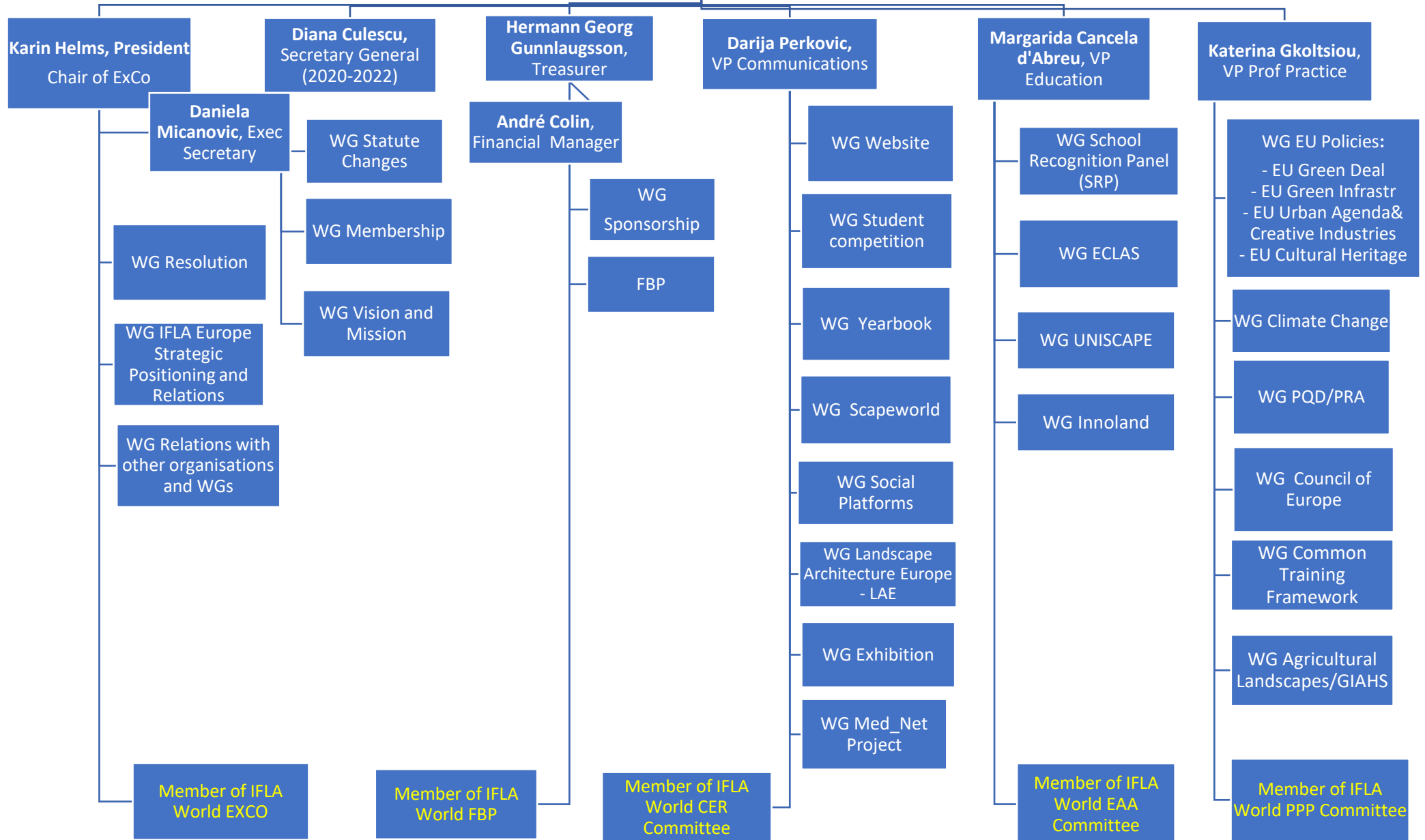
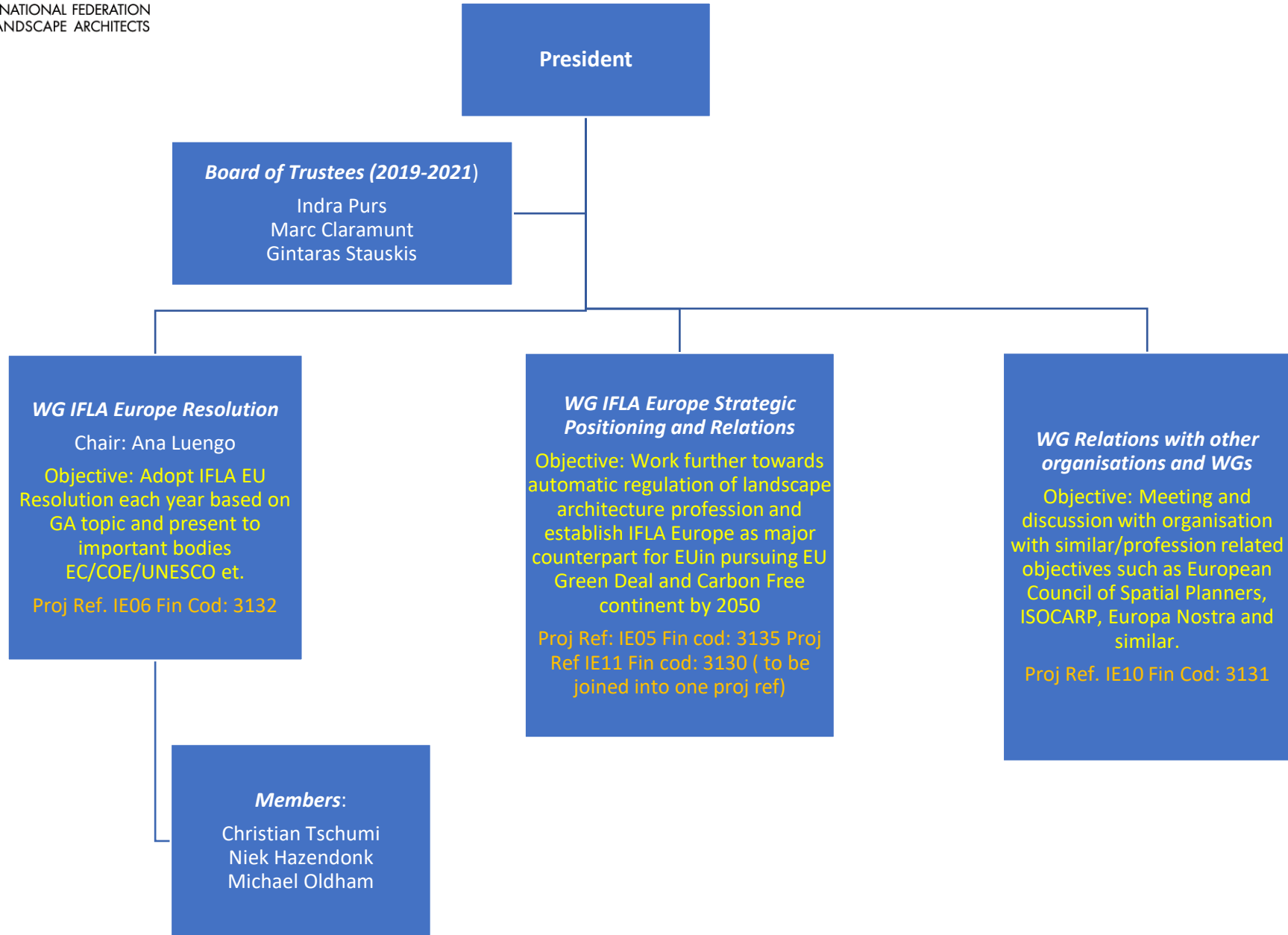
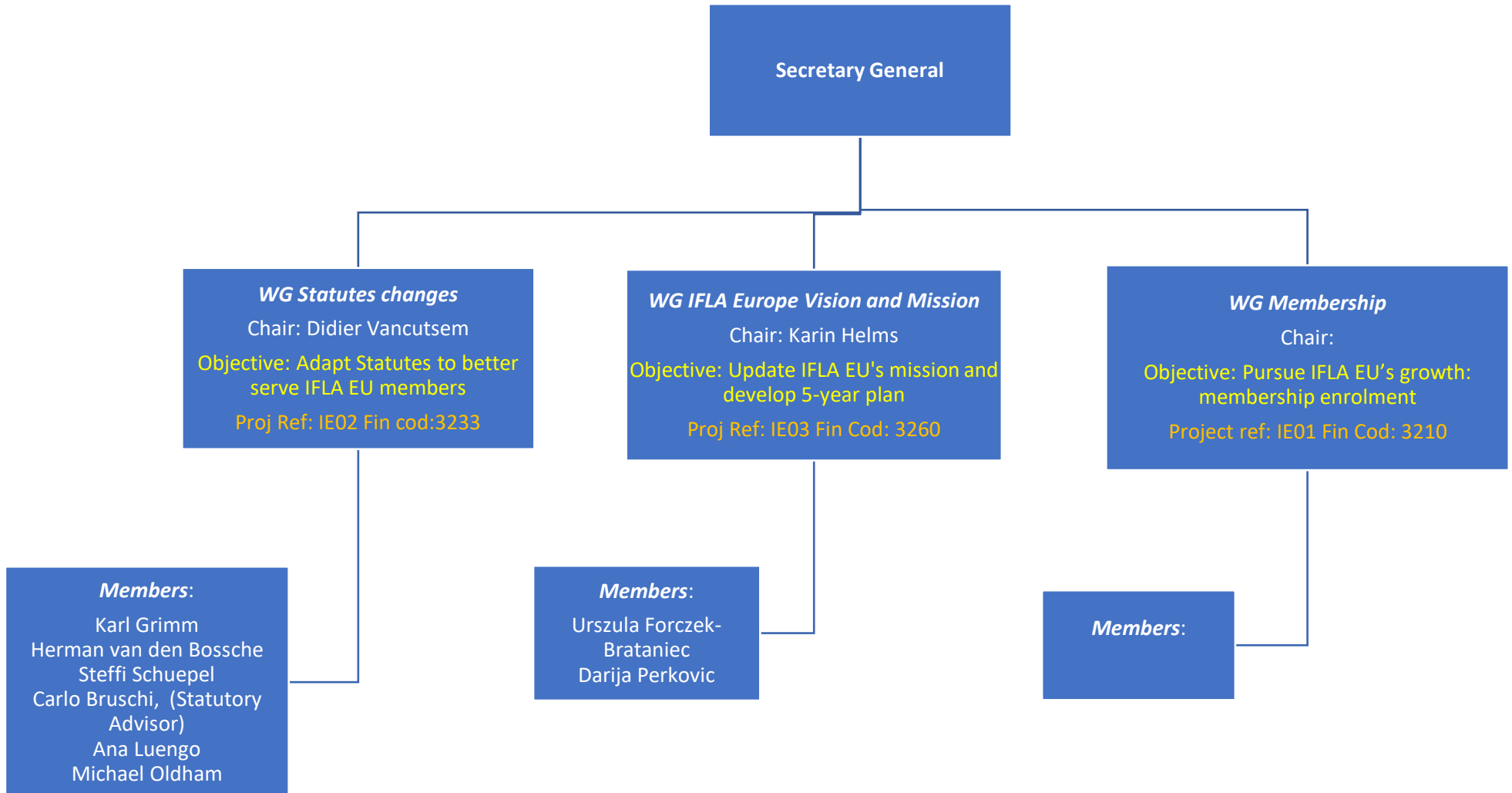
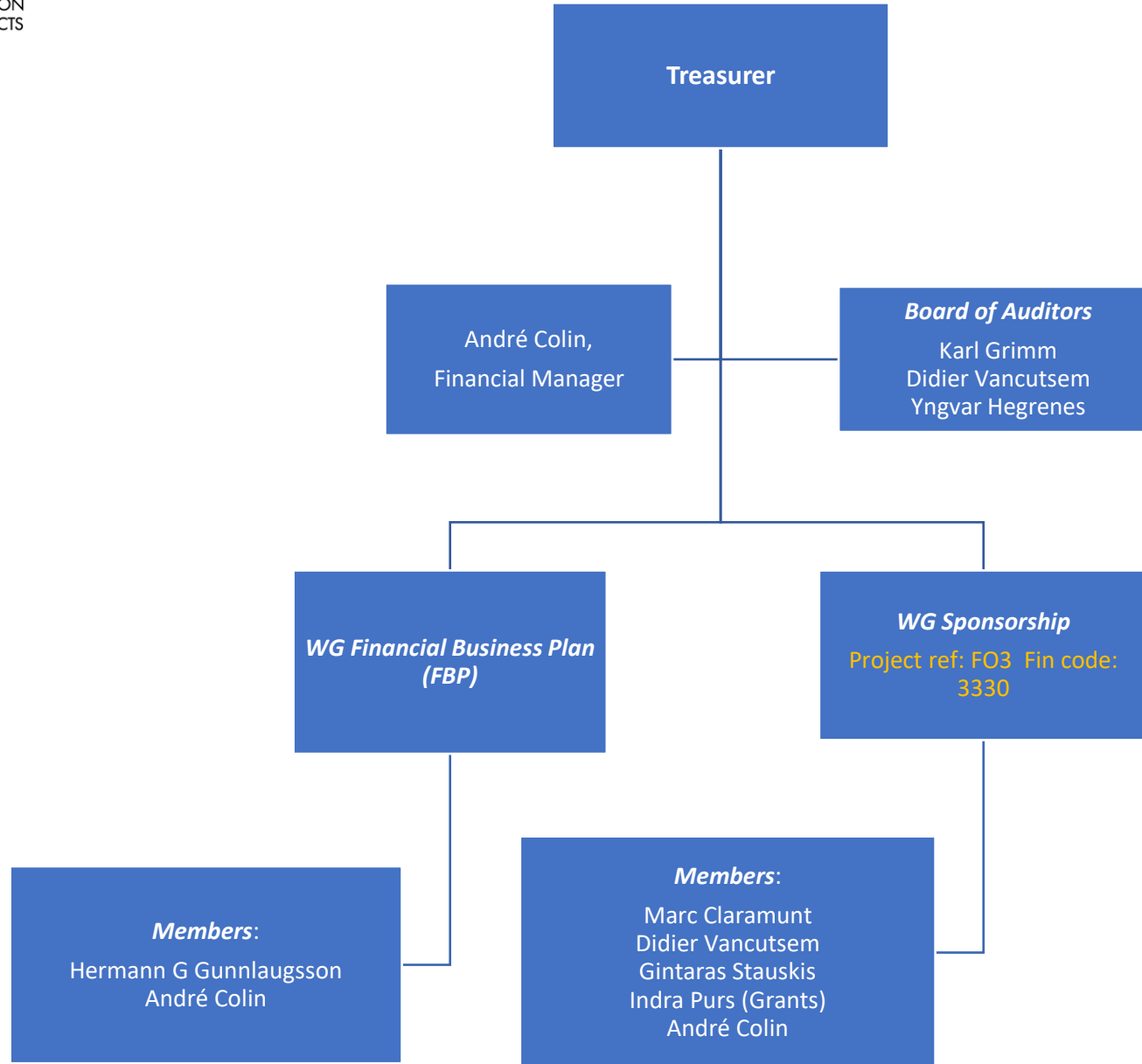


**IFLA EUROPE Executive  
Council  
2019-2021**









**VP Communication Committee**

Objective: Raise awareness about IFLA Europe, LA profession, role of landscape architects in fighting climate challenges with Nature Based Solutions

**WG Website/Social platforms**

Chair: Daniela Micanovic

Proj Ref: C02 Fin cod: 537

**WG Youth Competition**

Chair: Manuel Sanchez

Proj Ref C07, Fin cod 535

**WG Yearbook**

Chair: Darija Perkovic

Proj Ref: C05, Fin cod: 533

**WG Scapeworld**

Chair: Manuel Sanchez

Proj Ref: C06 Fin code: 531

**WG LAE**

Chair: Gertjan Jobse

Proj Ref: C08, Fin code 532

**WG Exhibition**

Chair: Urszula Forczek-Brataniec

Objective: exhibit best LA projects from members

Proj Ref C11, Fin cod: 538

**Med\_Net Project**

Chair: Uta Zorzi

Proj Ref: C10 Fin cod:541

**Members:**

Laure Aubert  
Daniela Micanovic

**Members**

Benoit Zachelin  
Daniela Micanovic

**Members:**

Urszula Forczek-Brataniec

**Members:**

Anna Levonmaa  
Jana Pyszkova  
Stefan Lancaric (**next edition 2022!**)

**Members:**

Darija Perkovic  
Katerina Gkoltsiou  
Ariane Delilez  
Nikola Watté  
Leor Lovinger  
Simone Scuderi  
Margarida Cancela D'Abreu  
Manuel Sanchez  
Urban Svegl  
Sukran Sahin  
**Marlene Chachine, Lebanon**  
Daniela Micanovic

## VP Education Committee

**Objective:** ensure solid Landscape Architecture Education around Europe, for effective professional practice; Permanent updated information on European Landscape Architecture programmes, for student's movement and professional recognition; Co-operation between academic and professional organisations, promoting landscape valorisation

### *WG School Recognition Panel SRP*

Chair: Margarida Cancela  
d'Abreu

Proj Ref: E01 Fin cod: 511

#### **Members:**

Karin Helms  
Ana Luengo  
Andreja Tutundzic  
Emilia Weckman  
Hermann G  
Gunnlaugsson  
Ioana Tudora  
Marc Claramunt  
Marina Cervera  
Teele Nigola  
Sophia Meeres, ECLAS

### *WG ECLAS*

Chair: Ioana Tudora

Proj Ref: E03 Fin cod: 513

#### **Members**

Paula Simões  
Ellen Fetzer, ECLAS  
Sophia Meeres, ECLAS

### *WG UNISCAPE*

Chair: Margarida Cancela  
d'Abreu

Proj Ref: E04 Fin cod: 514

### **Innoland Project**

Chair: Fritz Auweck

#### **Members:**

Gintaras Stauskis  
Marina Cervera  
André Colin, Fin Man  
Daniela Micanovic

